



## False ceilings with closed slats, product card.

### Materials

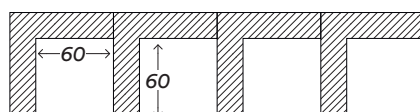


Mdf



Oak

### Typologies



ceilings sections



These false ceilings comprise “L” shaped elements that are available in three formats whose sides measure 60×60 mm, 60×40 mm, and 60×20 mm, with a thickness of 20 mm. They are available with a natural spruce finish or tinted, in through-coloured MDF or lacquered.

The ceilings are fitted with a metal profile frame that has an anchoring

system that hooks onto the structure of the building which the wood modules are hooked onto with a patented snap element that allows the ceiling to be closed off, yet completely accessible for inspection.

### Optionals:

The fire-proofing treatment of the slats

ensures that the wood is class 1 fire-resistant.

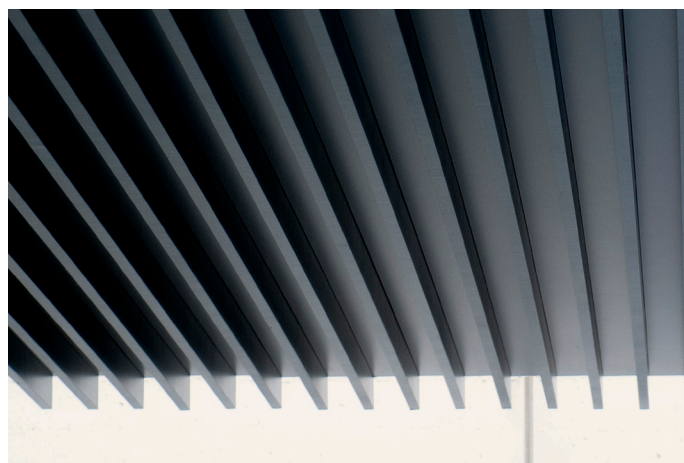
Approximate total weight 30 Kg/m<sup>2</sup>.

© 2015 all rights reserved



## False ceilings with closed slats, **product card.**

[www.nodoo.it](http://www.nodoo.it)



Top left and below details of a natural spruce false ceiling; above details with a lacquered finish.

